

DOSSIER TECHNIQUE

Direction active à assistance variable

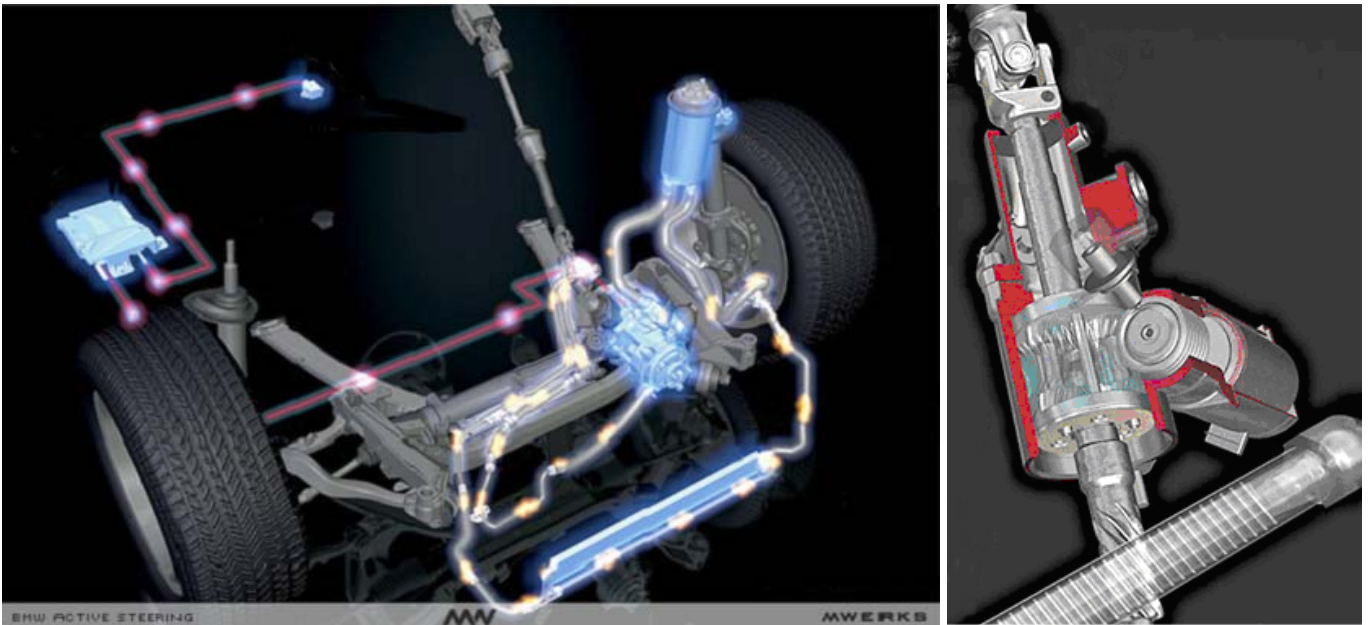


Image 1. Direction active à assistance variable, objet de l'étude

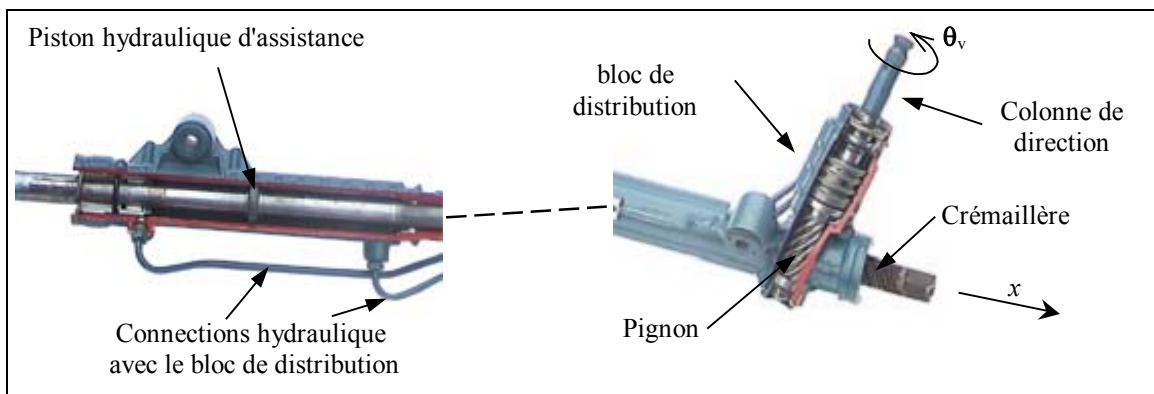


Image 2. Direction à assistance variable "Servotronic"

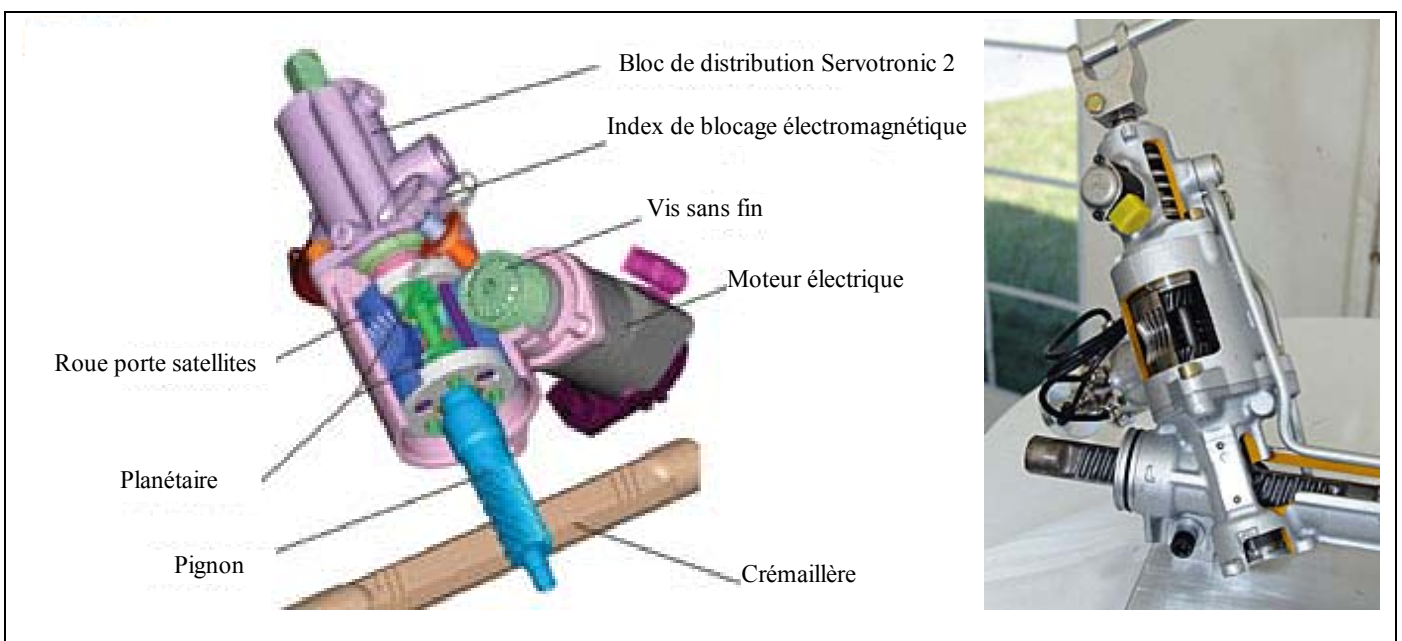


Image 3. Dispositif d'activation "AFS", ajouté à la direction à assistance variable

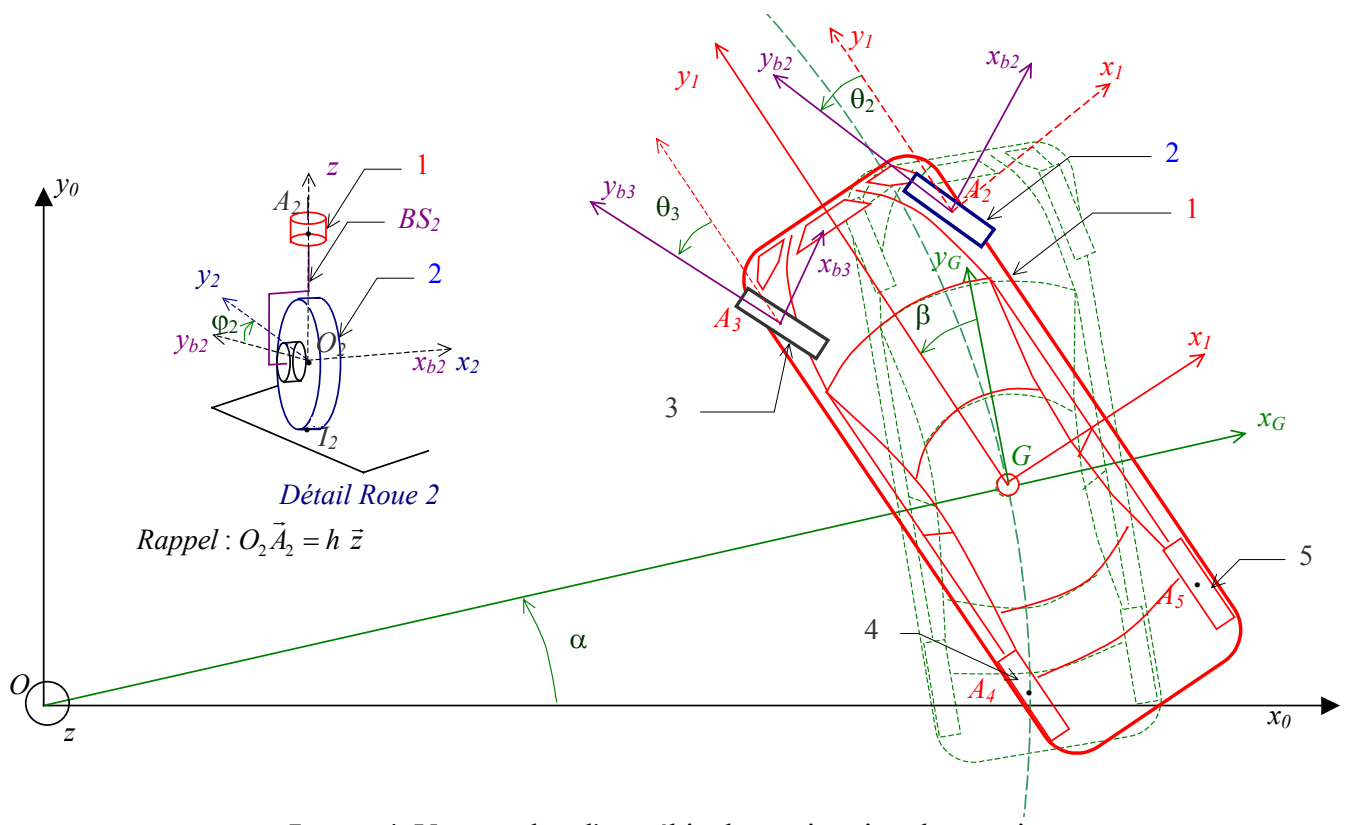


Image 4. Vue en plan d'un véhicule en situation de sur-virage

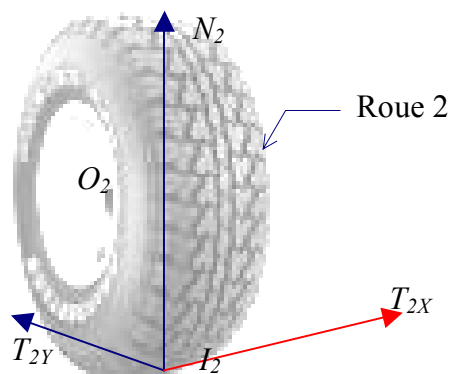


Image 5.a. Actions de contact sol/pneumatique

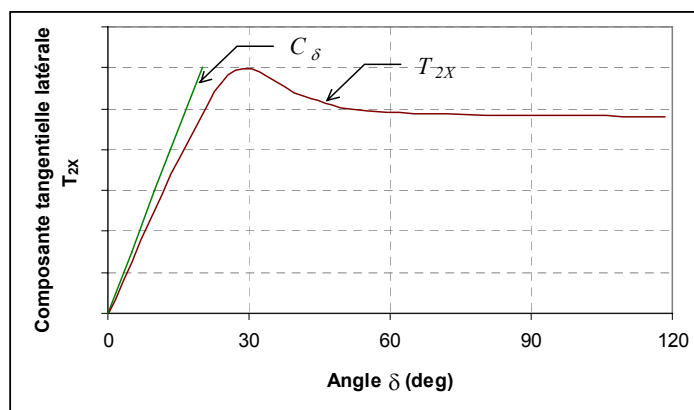
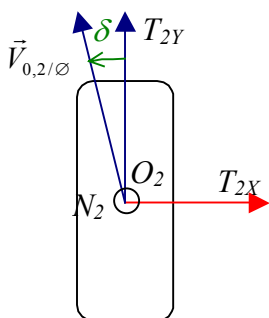


Image 5.b Effort T_x en fonction de l'angle de dérive

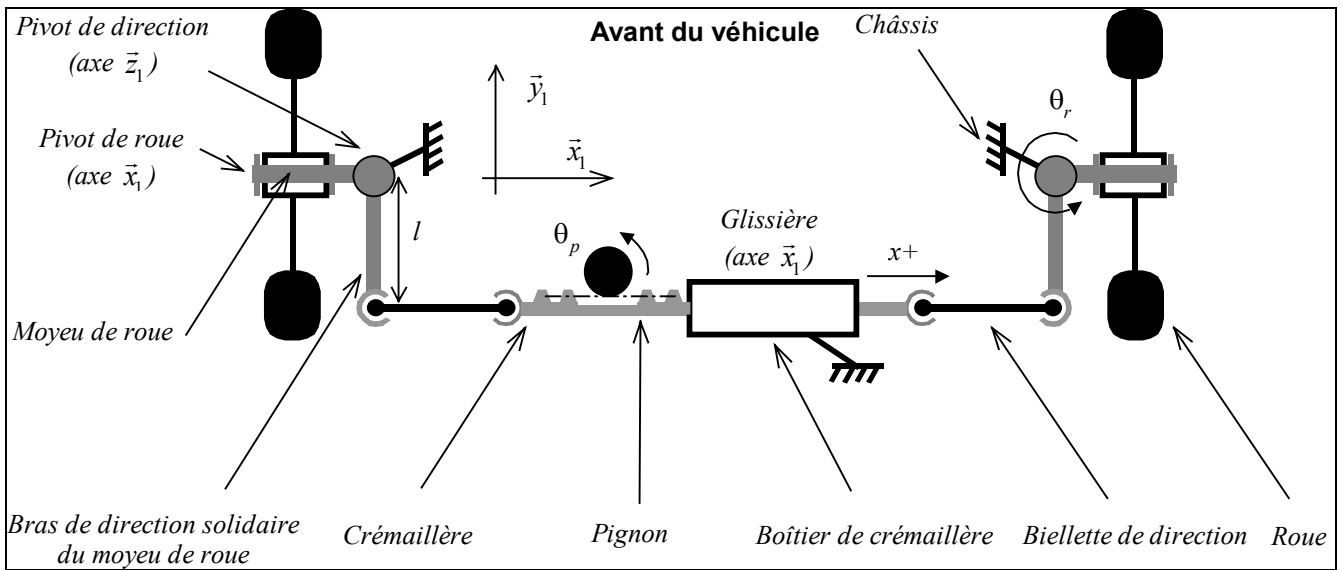


Figure 1. Direction d'un véhicule (en vue de dessus)

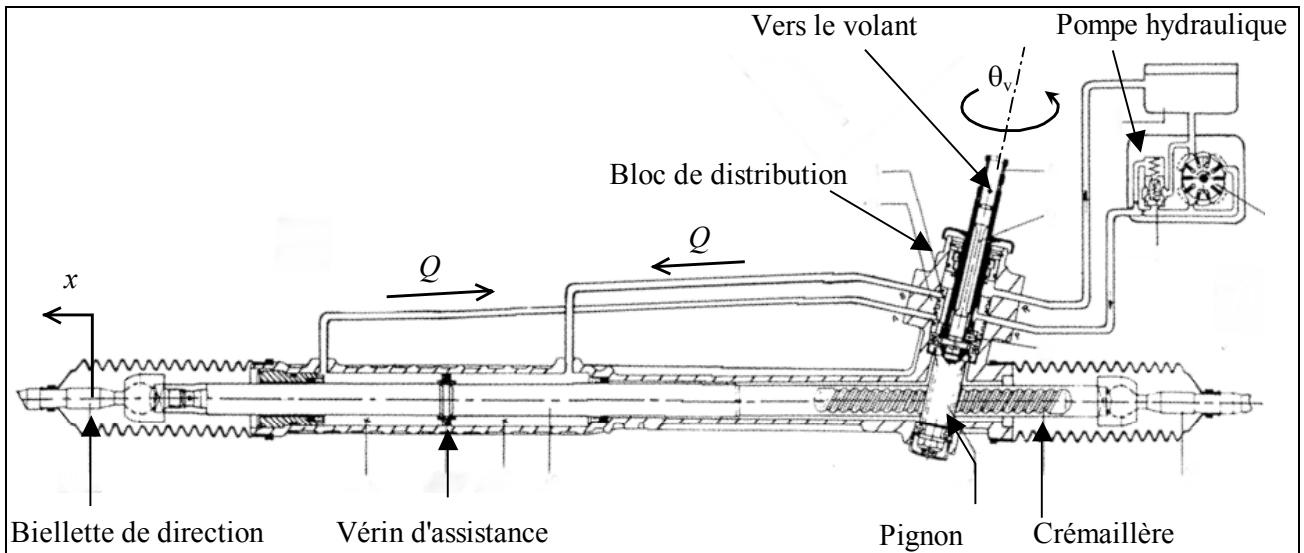


Figure 2. Direction à assistance variable

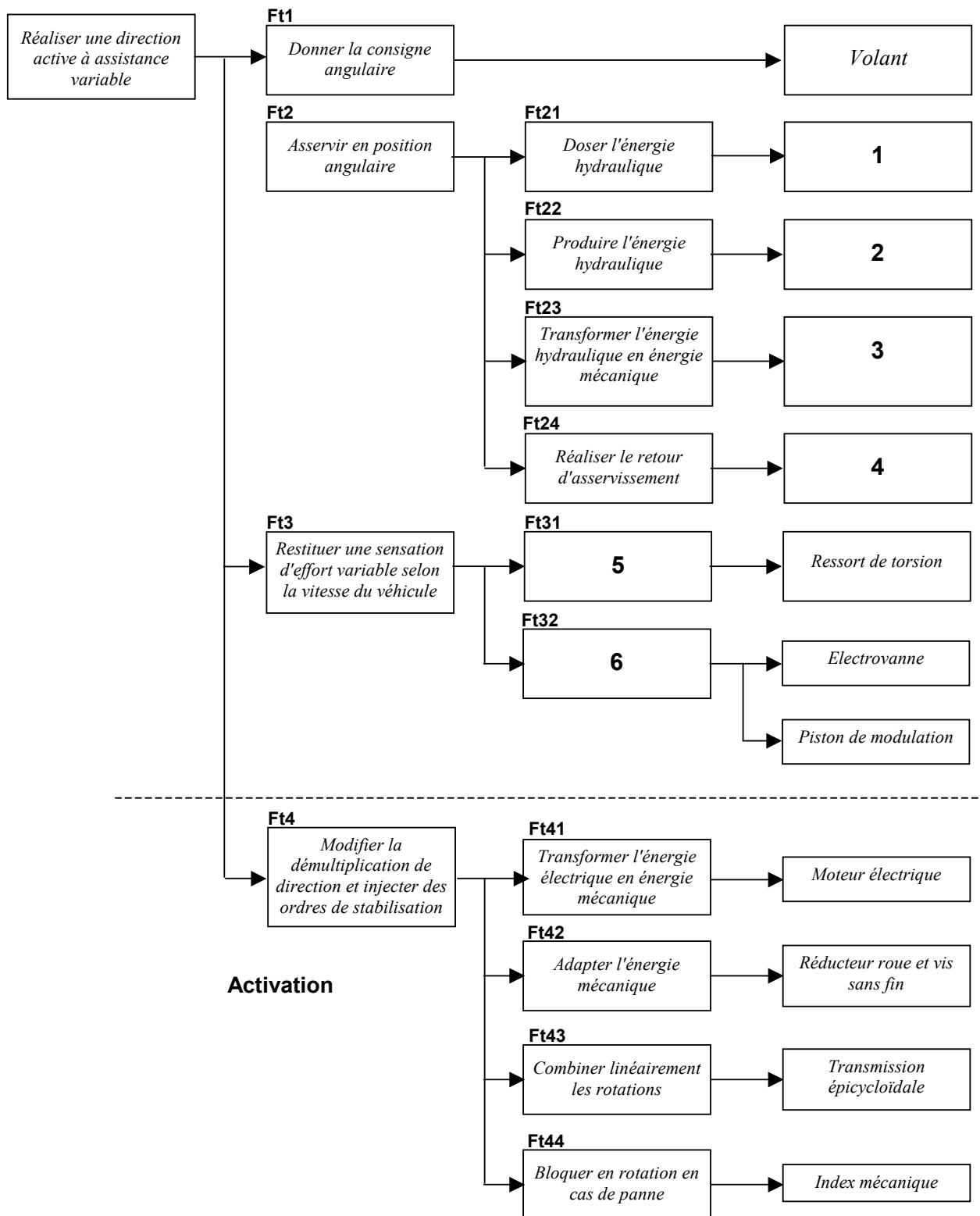


Figure 3. Diagramme FAST partiel de la direction à assistance variable

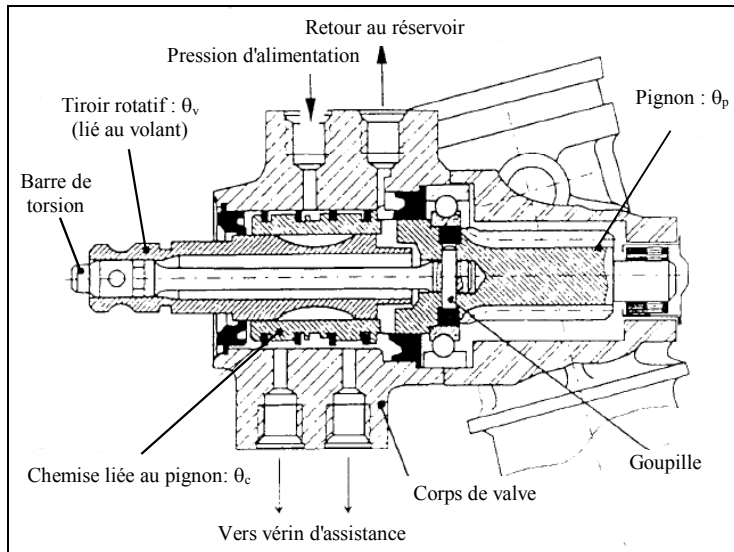


Figure 4. Bloc de distribution (ou valve) de direction assistée

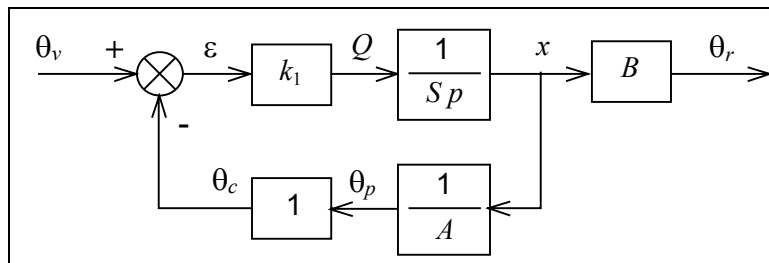
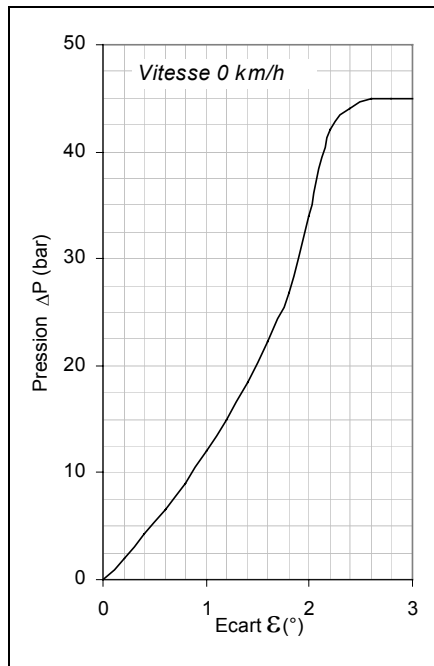
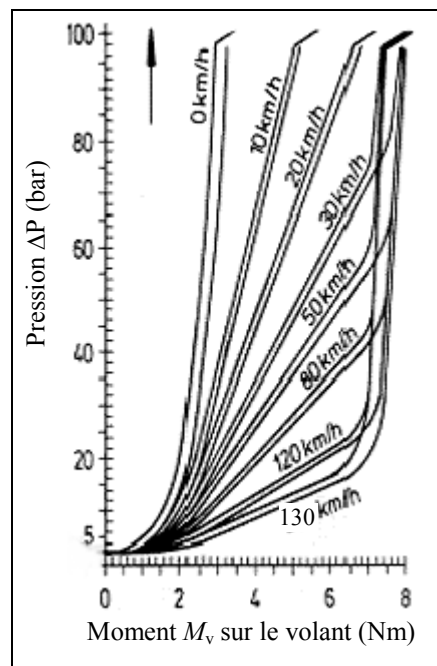


Figure 5. Schéma-bloc de la fonction asservissement de position



a)



b)

Figure 6. Caractéristiques d'assistance d'une direction "Servotronic"

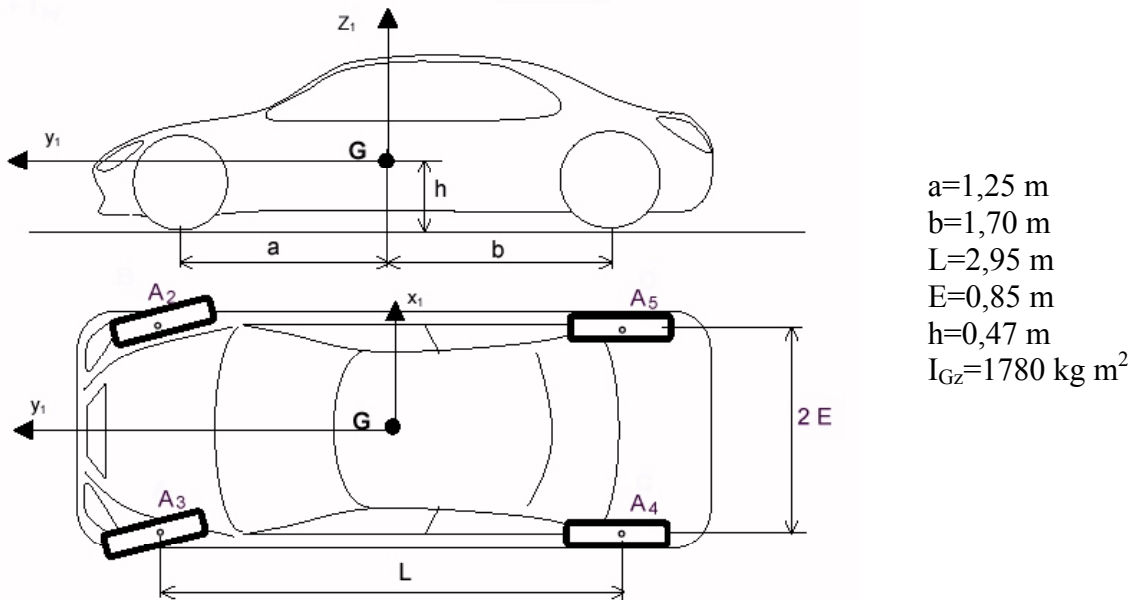


Figure 7. Caractéristiques du véhicule